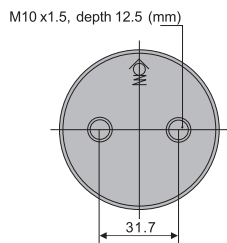
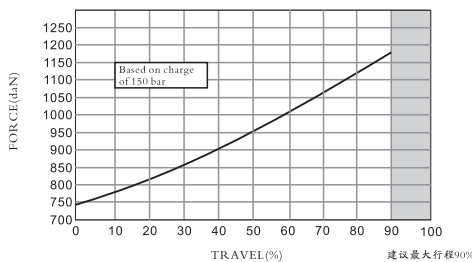


尺寸参数

Order NO.	行程S mm	初始力 N	终点力 N	Lmin mm	L±0.25mm mm
PB750-013	12.6	7440	12400	107.4	120
PB750-025	24.8			121.2	146
PB750-038	37.8			133.2	171
PB750-050	50.2			145.8	196
PB750-063	62.8			159.2	222
PB750-075	75.2			171.8	247
PB750-088	88.8			183.7	272.5
PB750-100	100.8			197.2	298
PB750-113	113.8			209.2	323
PB750-126	126.8			222.2	349
PB750-139	139.8			234.7	374.5
PB750-151	151.8			248.2	400
PB750-165	165.0			260.2	425.2
PB750-176	176.8			273.2	450
PB750-190	189.8			286.2	476
PB750-202	202.0			299.0	501
PB750-253	253.0			350.0	603



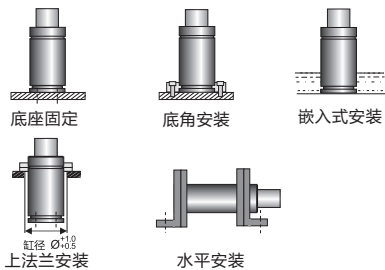
曲线图



基本参数

充气介质.....氮气N2
充气压力.....25~150Bar
工作温度.....0~80℃
动力/压力随温度增加.....±0.3%/℃
每分钟最多冲程次数.....~15至40（在20℃时）
活塞最快速率.....1.6m/s
最大使用行程.....90%

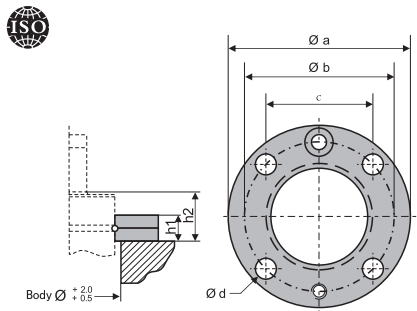
安装建议



订购方法

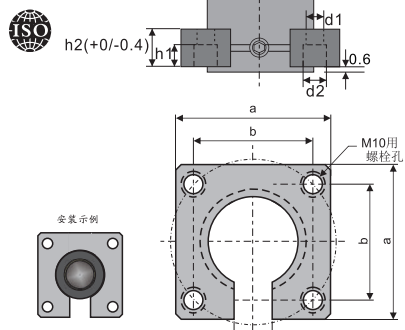
PB 750-050-P150-XXXX
型号 安装方式选择 充气压力(bar)

PFC-750



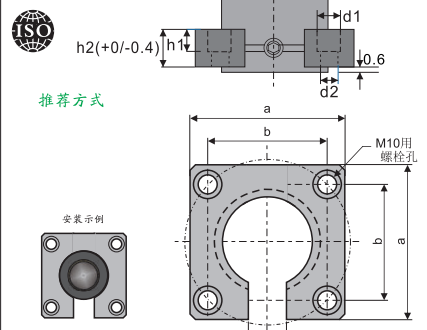
Order No.	a	b	c	d	h1	h2
PFC-750	95	80	56.5	9	13	24

PSF-750



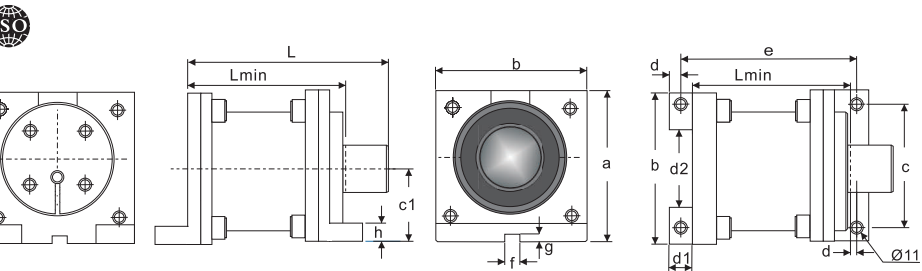
Order No.	a	b	c	d1	d2	h1	h2
PSF-750	76.2	53.9	20	11	18	11	25

PSF1-750



Order No.	a	b	c	d1	d2	h1	h2
PSF1-750	76.2	53.9	20	18	11	11	25

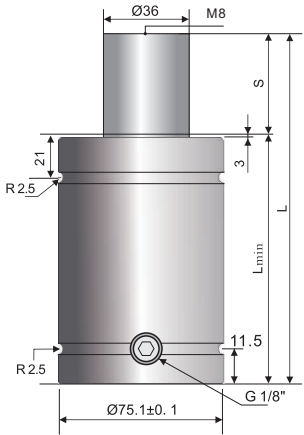
PB750-SM



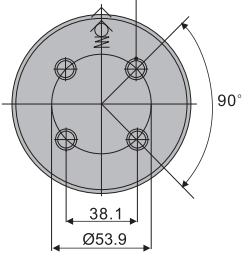
Order No.	a	b	c	c1	d	d1	d2	e	f	g	h
PB750-SM	68	60	42	38	11	22	22	L+22	12.7	6.5	13

尺寸参数

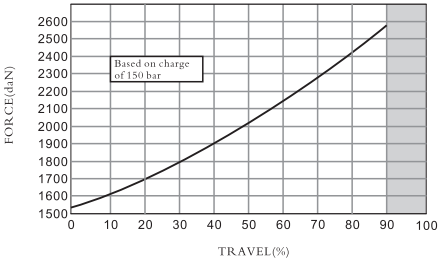
Order NO.	行程S	初始力	终压力	Lmin	L±0.25mm
	mm			mm	mm
PB1500-013	12.6	15000	22950	114.1	126.7
PB1500-025	24.8			127.2	152.0
PB1500-038	37.8			139.7	177.5
PB1500-050	50.2			253.2	203.0
PB1500-063	62.8			165.2	228.0
PB1500-075	75.2			178.8	254.0
PB1500-088	88.8			190.5	279.3
PB1500-100	100.8			203.2	304.0
PB1500-113	113.8			216.2	330.0
PB1500-126	126.8			228.7	355.5
PB1500-139	139.8			241.7	381.5
PB1500-151	151.8			254.2	406.0
PB1500-165	165.0			266.7	431.7
PB1500-176	176.8			280.2	457.0
PB1500-190	189.8			292.2	482.0
PB1500-202	202.0			305.0	507.0
PB1500-229	229.0			330.0	559.0
PB1500-253	253.0			356.0	609.0
PB1500-267	267.0			357.5	624.5
PB1500-303	303.0			408.0	711.0



M12x1.75, 深度 12.5 (mm)



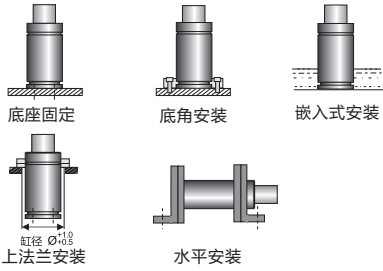
曲线图



基本参数

充气介质.....氮气N2
充气压力.....25~150Bar
工作温度.....0~80℃
动力/压力随温度增加.....±0.3%/℃
每分钟最多冲程次数.....~15至40（在20℃时）
活塞最快速率.....1.6m/s
最大使用行程.....90%

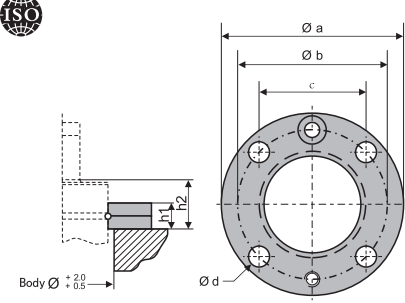
安装建议



订购方法

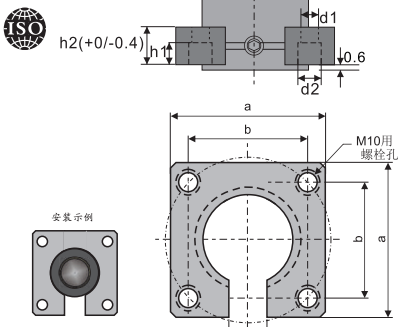
PB1500-050-P150-XXXX
型号 安装方式选择 充气压力(bar)

PFC-1500



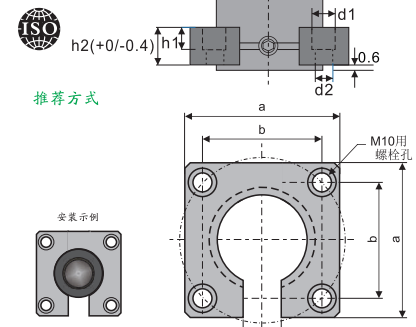
Order No.	a	b	c	d	h1	h2
PFC-1500	122	104	73.5	11	16	29

PB1500-SF



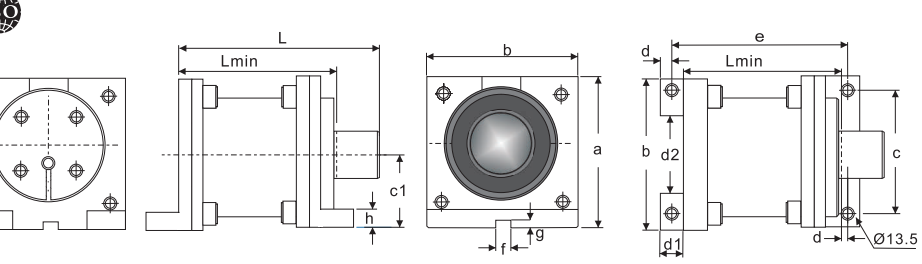
Order No.	a	b	c	d1	d2	h1	h2
PB1500-SF	101.6	76.2	24	11	18	13	25.4

PB1500-SF1



Order No.	a	b	c	d1	d2	h1	h2
PB1500-SF1	101.6	76.2	24	18	11	13	25.4

PB1500-SM

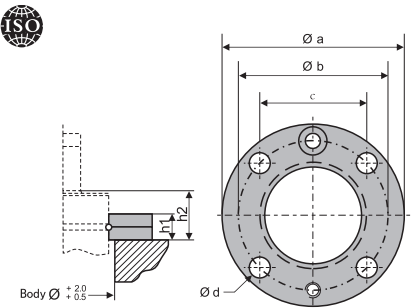


Order No.	a	b	c	c1	d	d1	d2	e	f	g	h
PB1500-SM	99.5	86	57	56.5	14	28	32	L+28	12.7	6.5	19

尺寸参数

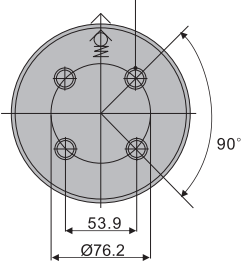
Order NO.	行程S	初始力	终点力	Lmin	L±0.25mm
	mm			mm	mm
PB3000-013	12.6	30000	48000	114.1	126.7
PB3000-025	24.8			127.2	152.0
PB3000-038	37.8			139.7	177.5
PB3000-050	50.2			253.2	203.0
PB3000-063	62.8			165.2	228.0
PB3000-075	75.2			178.8	254.0
PB3000-088	88.8			190.5	279.3
PB3000-100	100.8			203.2	304.0
PB3000-113	113.8			216.2	330.0
PB3000-126	126.8			228.7	355.5
PB3000-139	139.8			241.7	381.5
PB3000-151	151.8			254.2	406.0
PB3000-165	165.0			266.7	431.7
PB3000-176	176.8			280.2	457.0
PB3000-190	189.8			292.2	482.0
PB3000-202	202.0			305.0	507.0
PB3000-216	216.0			317.5	533.5
PB3000-229	229.0			330.0	559.0
PB3000-253	253.0			356.0	609.0
PB3000-303	303.0			408.0	711.0

PFC-3000

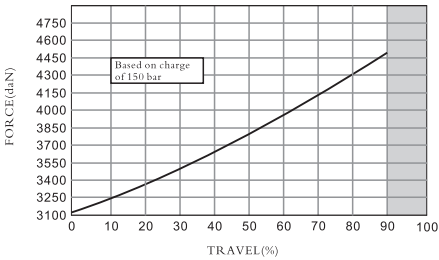


Order No.	a	b	c	d	h1	h2
PFC-3000	150	130	92	13.5	18	33

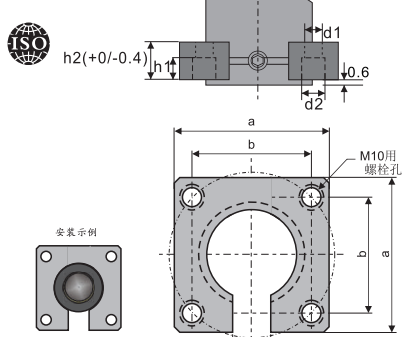
M12X1.75, 深度 12.5 (mm)



曲线图

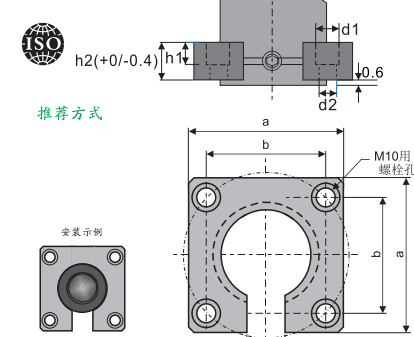


PB3000-SF



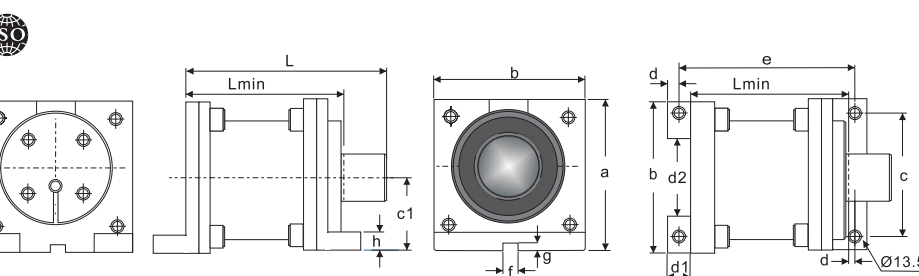
Order No.	a	b	c	d1	d2	h1	h2
PB3000-SF	127	98.3	30	11	18	13	25.4

PB3000-SF1



Order No.	a	b	c	d1	d2	h1	h2
PB3000-SF1	127	98.3	30	18	11	13	25.4

PB3000-SM

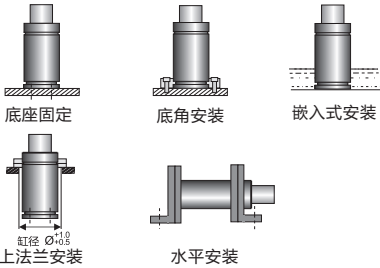


Order No.	a	b	c	c1	d	d1	d2	e	f	g	h
PB3000-SM	121.5	110	76	66.5	14	28	42	L+28	12.7	6.5	19

基本参数

充气介质.....氮气N2
充气压力.....25~150Bar
工作温度.....0~80°C
动力/压力随温度增加.....±0.3%/°C
每分钟最多冲程次数.....~15至40（在20°C时）
活塞最快速率.....1.6m/s
最大使用行程.....90%

安装建议

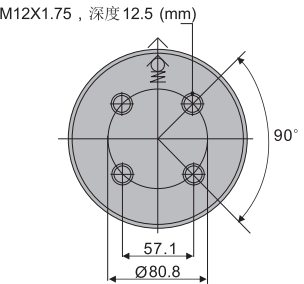
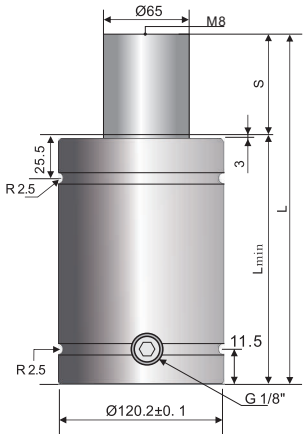


订购方法

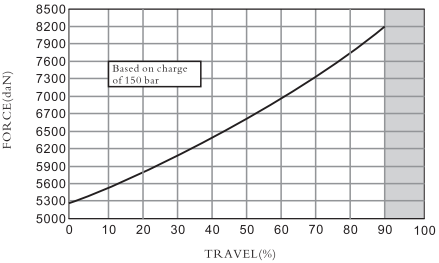
PB3000-050-P150-XXXX
型号 安装方式选择 充气压力(bar)

尺寸参数

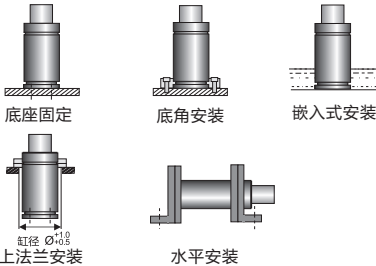
Order NO.	行程S	初始力	终压力	Lmin	L±0.25mm
	mm				
PB5000-013	12.6	50000	83000	114.1	126.7
PB5000-025	24.8			127.2	152.0
PB5000-038	37.8			139.7	177.5
PB5000-050	50.2			253.2	203.0
PB5000-063	62.8			165.2	228.0
PB5000-075	75.2			178.8	254.0
PB5000-088	88.8			190.5	279.3
PB5000-100	100.8			203.2	304.0
PB5000-113	113.8			216.2	330.0
PB5000-126	126.8			228.7	355.5
PB5000-139	139.8			241.7	381.5
PB5000-151	151.8			254.2	406.0
PB5000-165	165.0			266.7	431.7
PB5000-176	176.8			280.2	457.0
PB5000-190	189.8			292.2	482.0
PB5000-202	202.0			305.0	507.0
PB5000-216	216.0			317.5	533.5
PB5000-229	229.0			330.0	559.0
PB5000-253	253.0			356.0	609.0



曲线图



安装建议



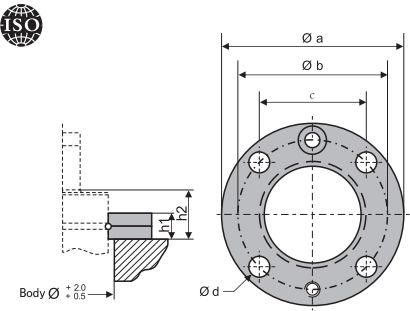
基本参数

充气介质.....氮气N2
充气压力.....25~150Bar
工作温度.....0~80℃
动力/压力随温度增加.....±0.3%/℃
每分钟最多冲程次数.....~15至40（在20℃时）
活塞最快速率.....1.6m/s
最大使用行程.....90%

订购方法

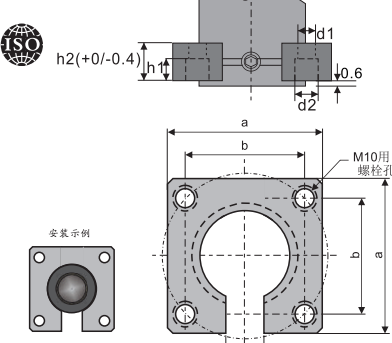
PB5000-050-P150-XXXX
型号 安装方式选择 充气压力(bar)

PFC-5000



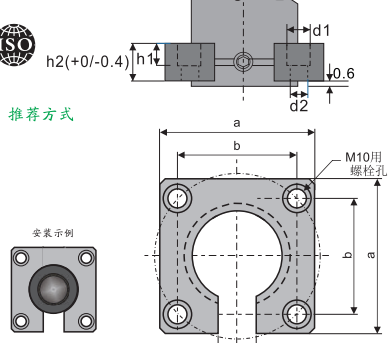
Order No.	a	b	c	d	h1	h2
PFC-5000	175	155	109.5	13.5	21	36

PB5000-SF



Order No.	a	b	c	d1	d2	h1	h2
PB5000-SF	139.7	114.3	40	11	18	13	25.4

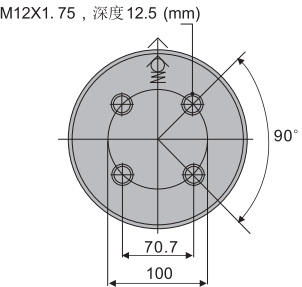
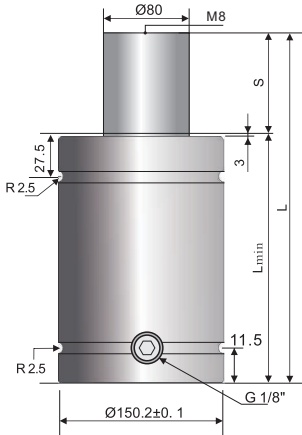
PB5000-SF1



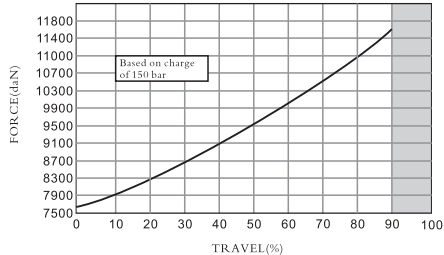
Order No.	a	b	c	d1	d2	h1	h2
PB5000-SF1	139.7	114.3	40	18	11	13	25.4

尺寸参数

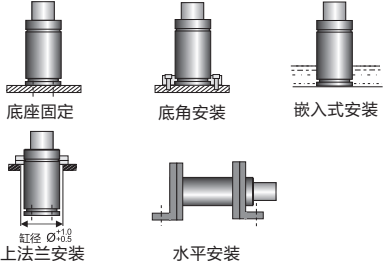
Order NO.	行程S	初始力	终点力	Lmin	L±0.25mm
	mm			mm	mm
PB7500-013	12.6	77000	127230	167.7	180.3
PB7500-025	24.8			180.7	205.5
PB7500-038	37.8			193.2	231.0
PB7500-050	50.2			205.8	256.0
PB7500-063	62.8			219.0	281.8
PB7500-075	75.2			231.8	307.0
PB7500-088	88.8			243.9	332.7
PB7500-100	100.8			257.2	358.0
PB7500-113	113.8			269.2	383.0
PB7500-126	126.8			282.5	409.3
PB7500-139	139.8			294.8	434.6
PB7500-151	151.8			307.2	459.0
PB7500-165	165.0			320.0	485.0
PB7500-176	176.8			333.2	510.0
PB7500-190	189.8			345.7	535.5
PB7500-202	202.0			359.0	561.0
PB7500-253	253.0			409.5	662.5



曲线图



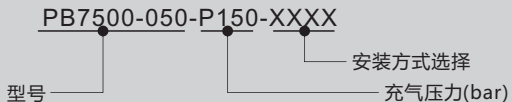
安装建议



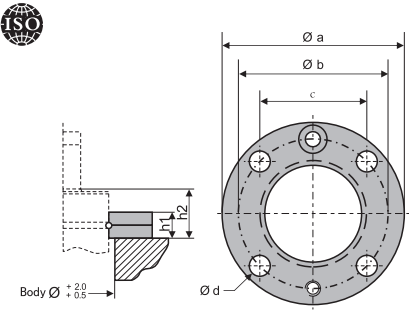
基本参数

充气介质.....氮气N2
充气压力.....25~150Bar
工作温度.....0~80°C
动力/压力随温度增加.....±0.3%/°C
每分钟最多冲程次数.....~15至40（在20°C时）
活塞最快速率.....1.6m/s
最大使用行程.....90%

订购方法

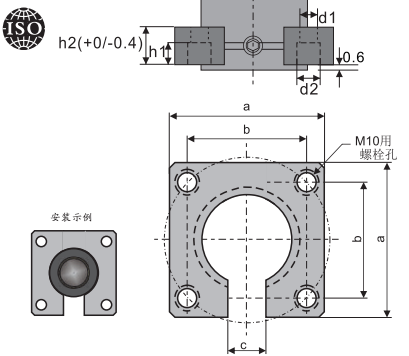


PFC-7500



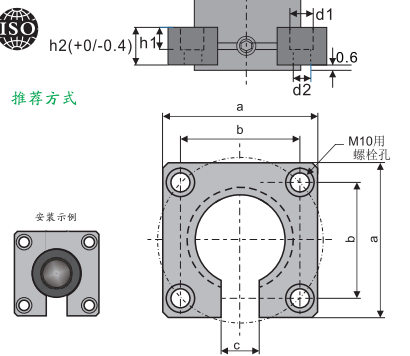
Order No.	a	b	c	d	h1	h2
PFC-7500	220	195	138	17.5	27	41

PB7500-SF



Order No.	a	b	c	d1	d2	h1	h2
PB7500-SF	177.8	139.7	50	11	18	17	25.4

PB7500-SF1



Order No.	a	b	c	d1	d2	h1	h2
PB7500-SF1	177.8	139.7	50	18	11	17	25.4

推荐方式